



鑫泰光电  
XINTAI

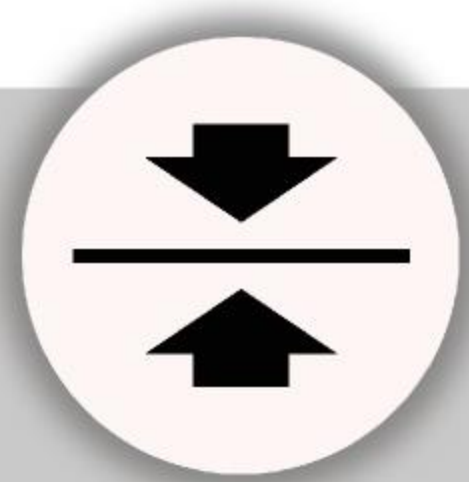
# CARBON FIBER LED DISPLAY

The first choice for high-end  
LED displays





Lighter



Thinner



Tougher

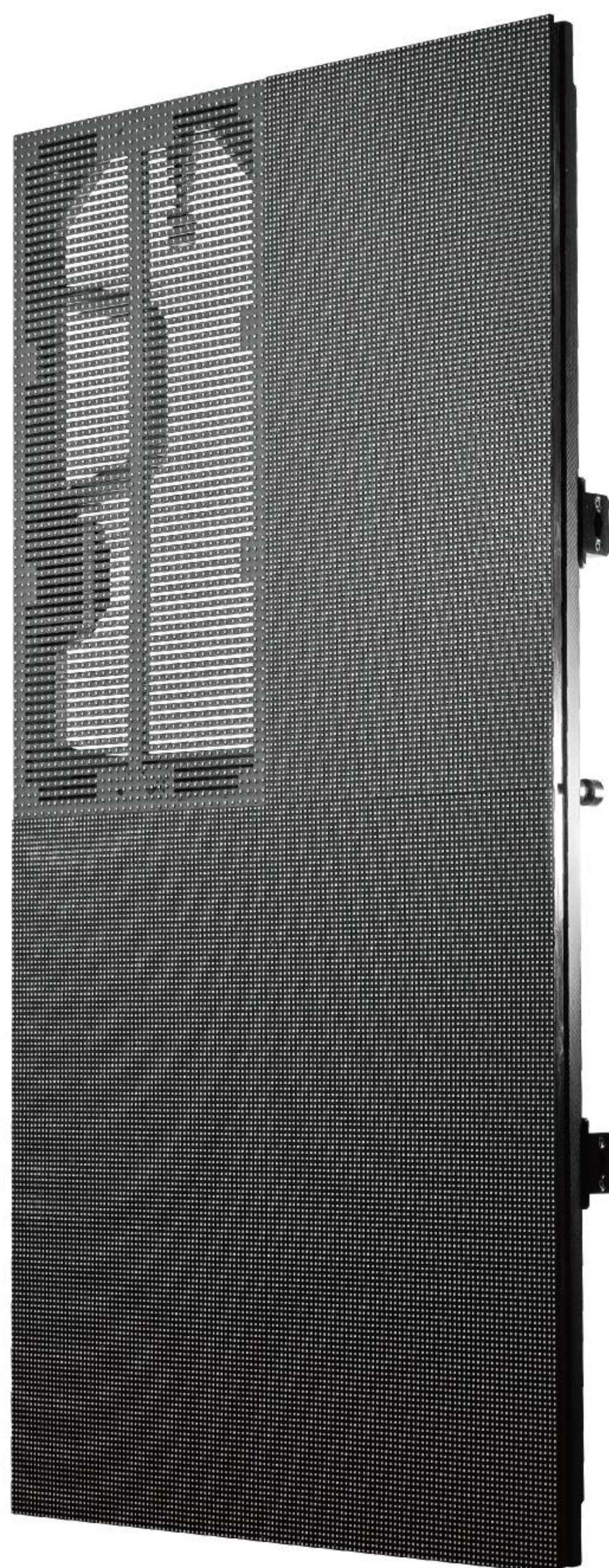


Faster

Ultra-light Weight & Slim : **40%** lighter than conventional rental display

6.9Kg

P6.94  
500x1000mm



8.5Kg

P3.91  
500x1000mm



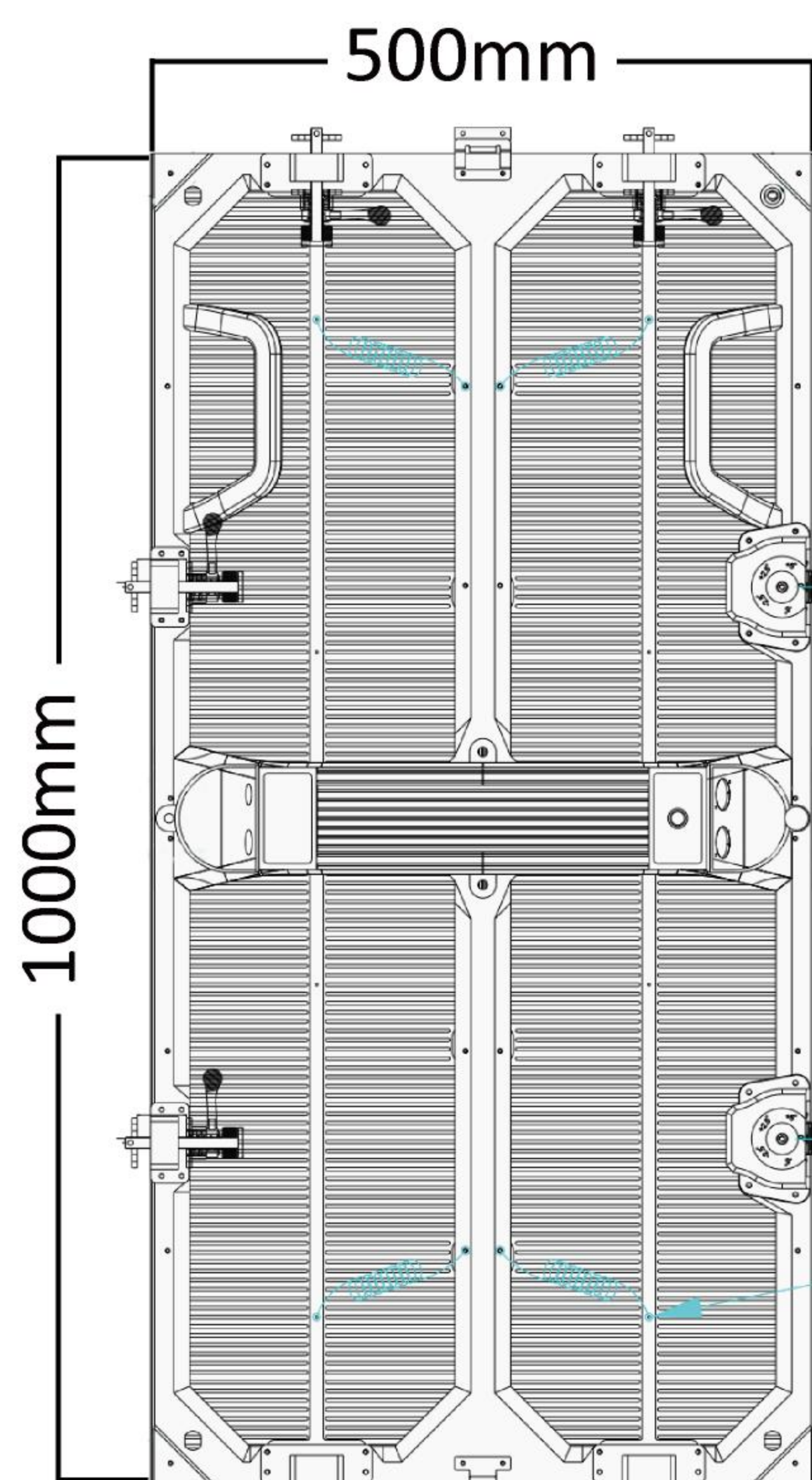
Screen Brightness >5000nits



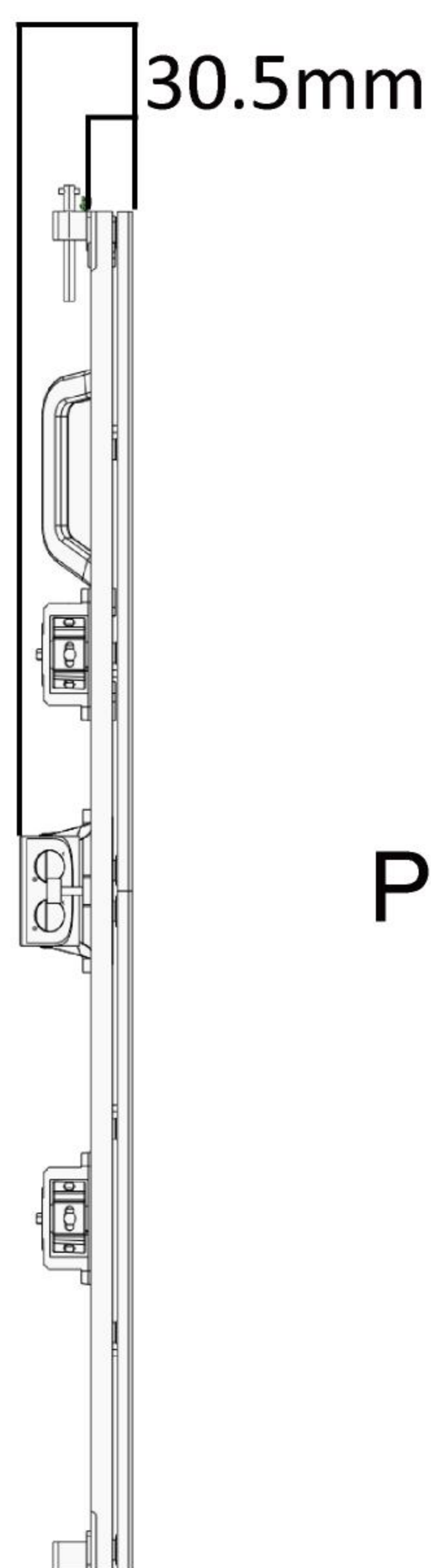
Waterproof IP65



Hub Connection, Front and Rear Maintenance



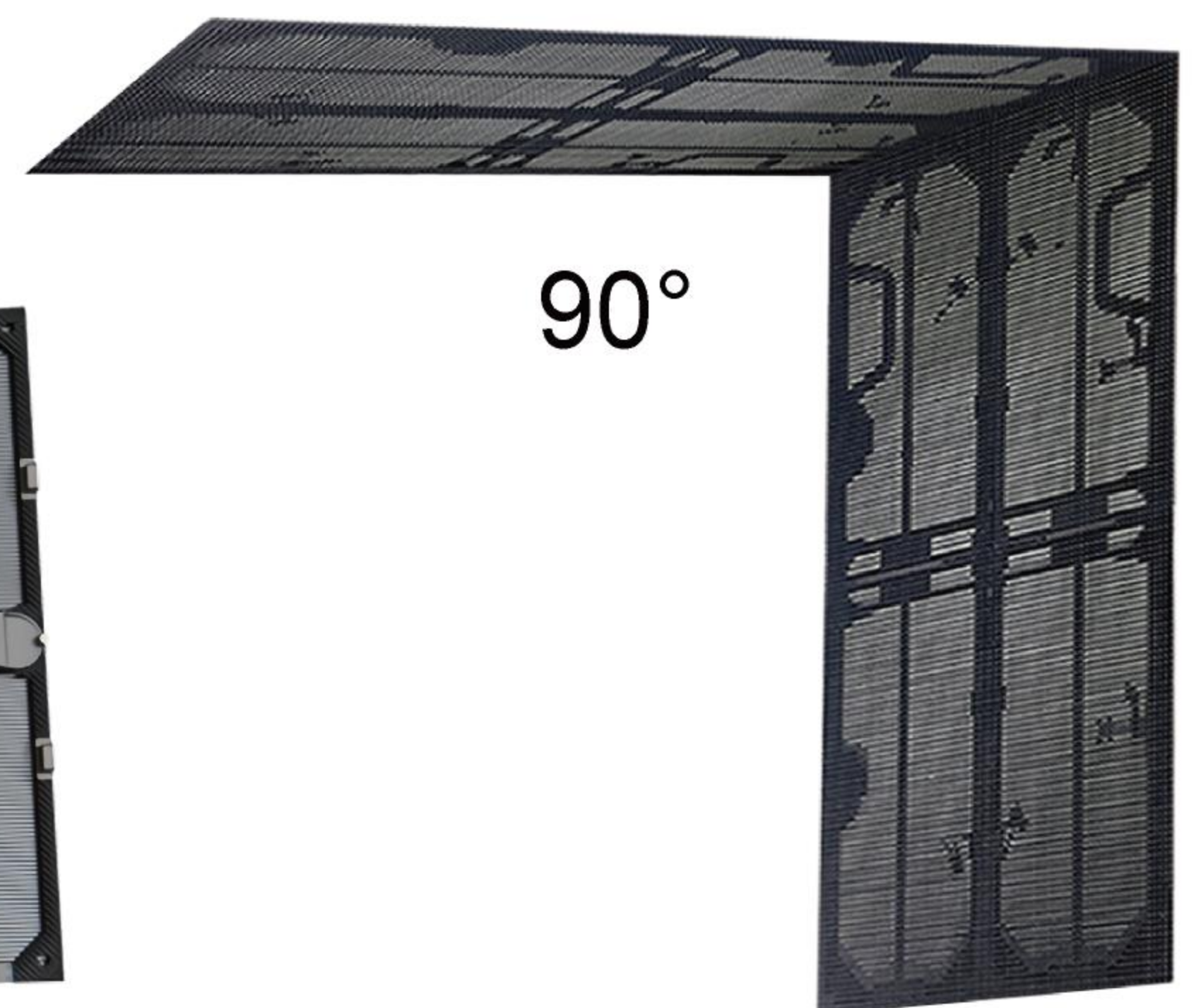
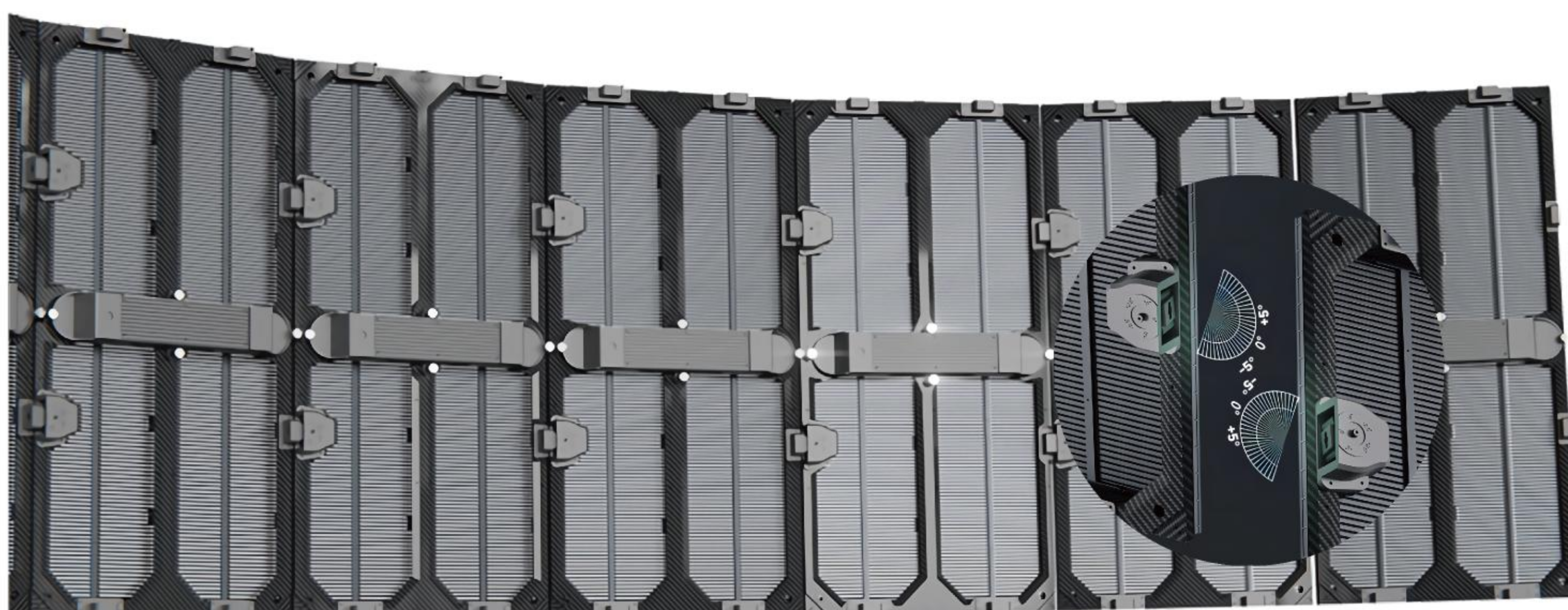
P6.94



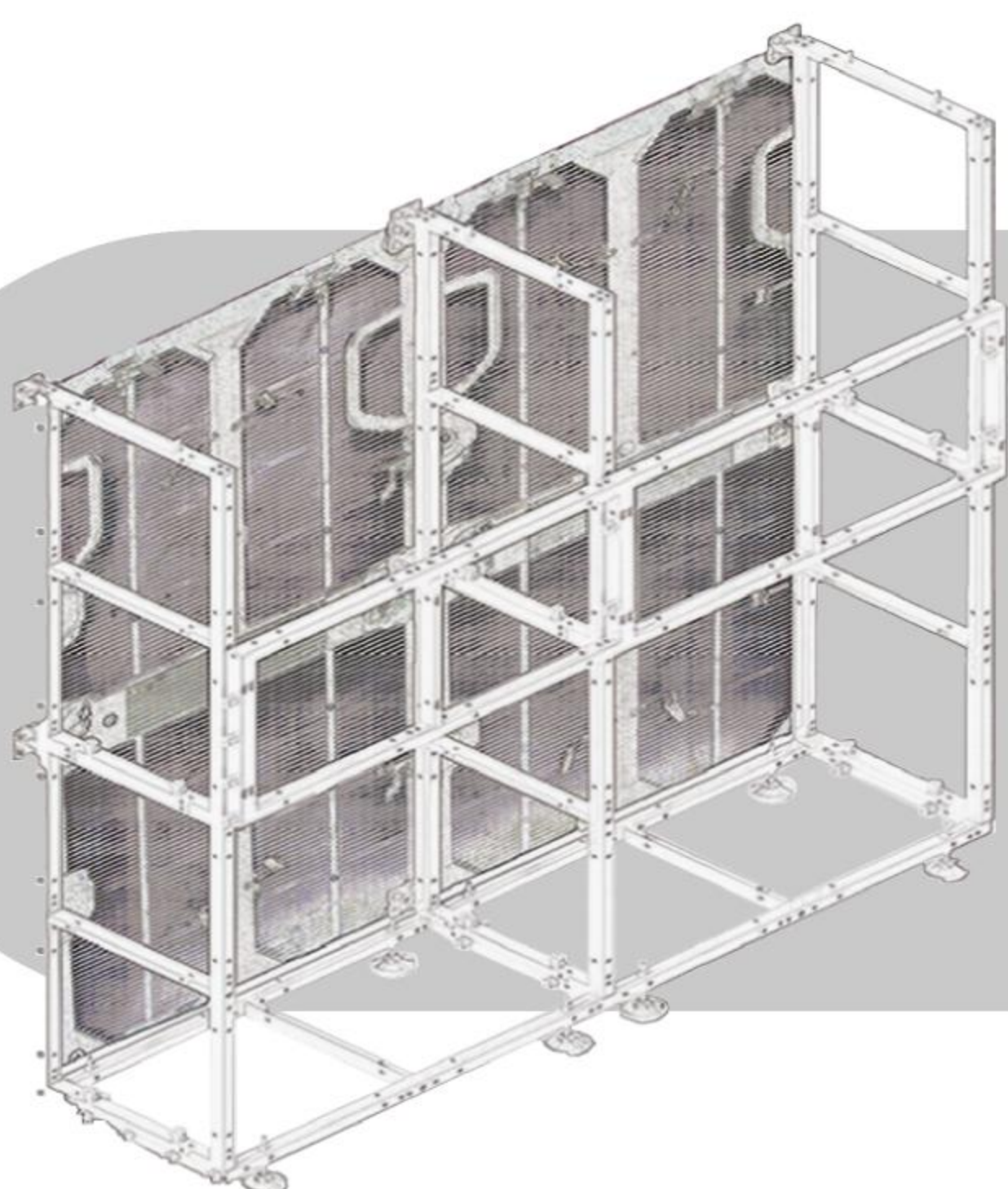
P3.91

High precision curve lock

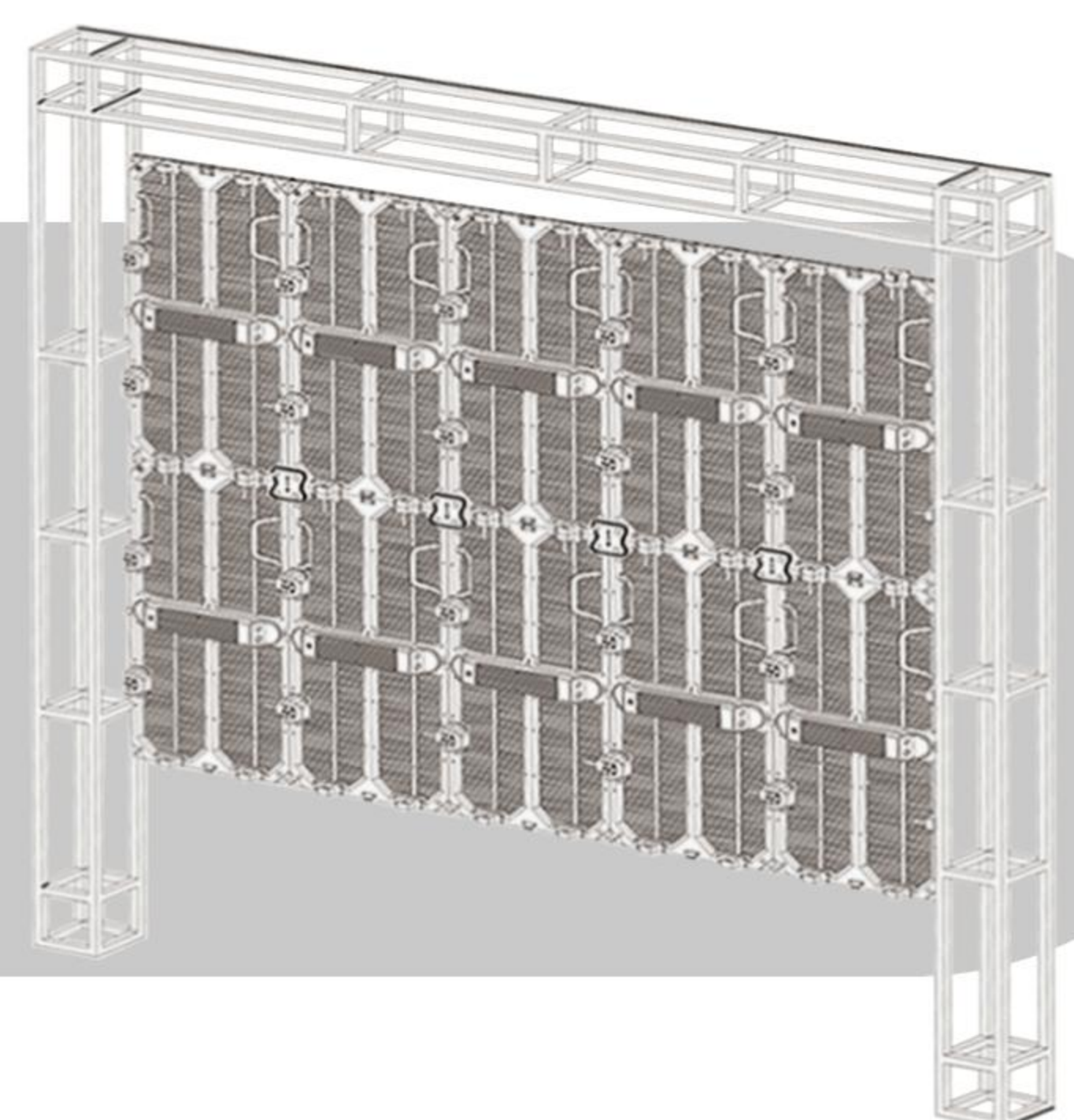
+5°~-5°



## Installation Method



Fixed installation



Truss hanging

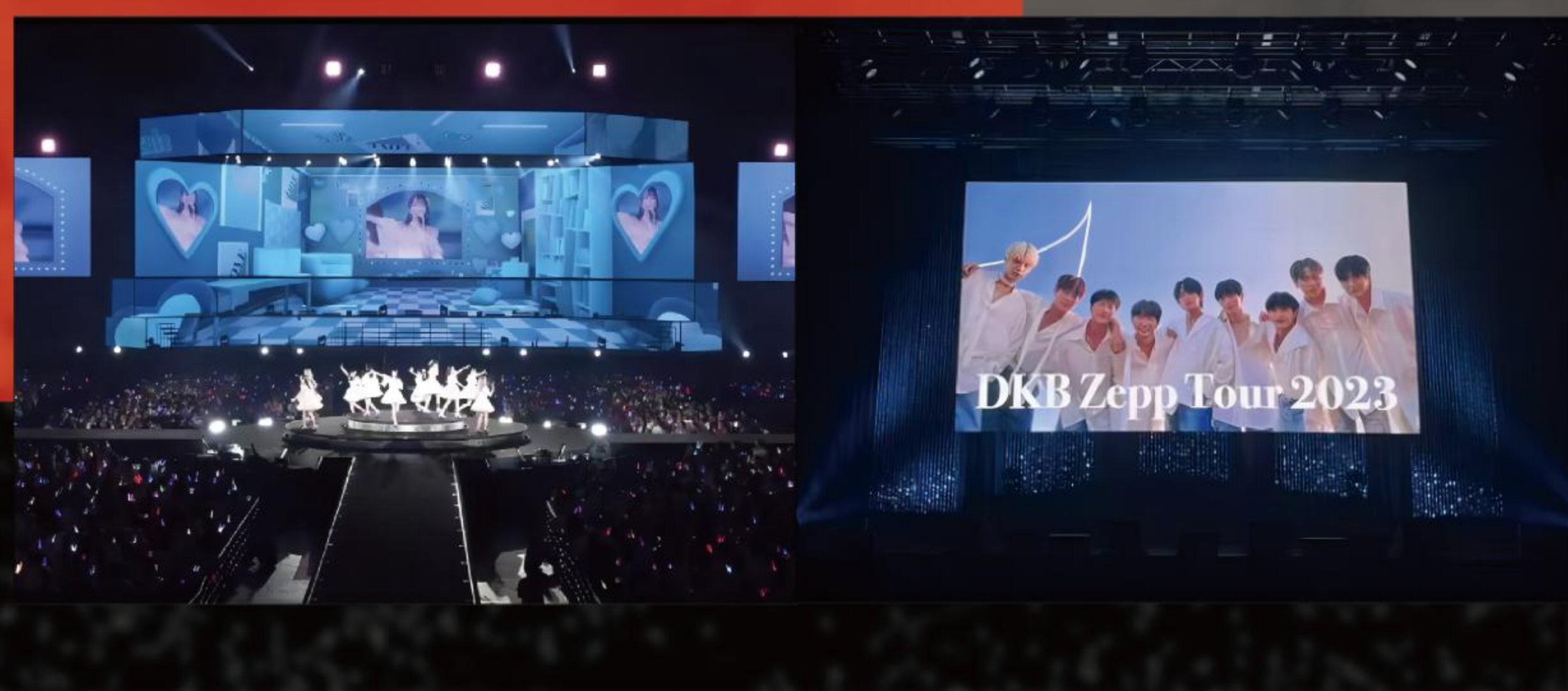
# CARBON FIBER LED DISPLAY

The first choice for high-end  
LED displays

## Specifications

No.	Items	Outdoor P6.9	Outdoor P3.9
1	Pixel Pitch	6.94mm	3.91mm
2	LED Configuration	SMD1921	SMD1921 ( Option: Black LEDs )
3	Module Size	250*500mm	250*500mm
4	Cabinet Size (WXHxD)	500x1000x63mm   19.69x39.37x 3.15in	500x1000x63mm   19.69x39.37x 3.15in
5	Cabinet Resolution (WXH)	72*144dots	128*256dots
6	Transparency	≥55%	0%
7	Pixel Density	20736 dots/m <sup>2</sup>	65536 dots/m <sup>2</sup>
8	Cabinet Material	Carbon Fiber	Carbon Fiber
9	Cabinet Weight	≤6.9kg	≤8.5kg
10	Brightness	≥5000cd/m <sup>2</sup> or Customized )	≥5000cd/m <sup>2</sup> or Customized
11	View Angle	H 140° , W 140°	H 140° , W 140°
12	Screen Service	Front/ Rear	Front/ Rear
13	Gray Scale	16bit	16bit
14	Refresh Rate	3840HZ	3840HZ
15	Curving	+ 5 or - 5°	+ 5 or - 5°
16	Working voltage	AC 86-264V/60Hz	AC 86-264V/60Hz
17	Power Consumption (Max/Avg)	800/280W/m <sup>2</sup>	800/280W/m <sup>2</sup>
18	IP Rate	IP65	IP65
19	Max. Hanging (vertical)	30 meters	30 meters

[www.xintai-elec.com/en](http://www.xintai-elec.com/en)



鑫泰光电  
XINTAI



86-0755 2943 8400



E-mail: [info@xintai-elec.com](mailto:info@xintai-elec.com)



Building 6, Hongxing Industrial Park,  
Shiyanyuanling, Baoan District, Shenzhen

